

H2S 2000

Electrochemical Gas Sensor for Hydrogen Sulfide

3-electrode sensor for industrial safety applications e.g. biogas & landfill

Class leading stability | Highly selective | High Range


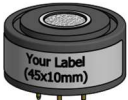



Performance Characteristics	
Measurement Range	0 - 2000 ppm
Sensitivity	60 ± 25 nA/ppm
Response Time (T ₉₀)	≤ 60 s at 2 min gas exposure
Baseline (in clean air)	< ± 250 nA
Baseline (in clean air)	< ± 4 ppm*
Linearity	< 15% of full scale
Repeatability	< 2%

* at midpoint sensitivity

Operating Conditions	
Temperature Range	-20°C to +50°C
Humidity Range	15% to 90% r.h. non-condensing
Pressure Range	800 – 1200 hPa
Recommended Load Resistor	10 Ohm
Bias Voltage	0 V
Recommended Orientation	sensor front pointing downwards or sideways

Lifetime	
Long Term Output Drift	< 15% per 6 months
Expected Operating Life	> 24 months in air
Recommended Storage conditions	5-20°C in sealed container
Warranty	18 months from date of dispatch

Performance and lifetime data are based on conditions at 20°C, 50% r.h. and ambient pressure.

Available Formats	
Name	Drawing
Part Number Weight	
4S AN062400 ~4.6 g	
7S AN062700 ~6.9 g	
Mini AN062000 ~2.4 g	
Classic 4 pin AN062C00 ~3.1 g	
Classic 8 pin compatible AN062B00 ~3.1 g	
Other customer specific formats upon request	

IMPORTANT NOTE:

Connection should be made via PCB sockets only. Soldering to pins will render your warranty void.

Intrinsic Safety Data	
Maximum o/c Voltage	< 1.3 V
Maximum s/c Current	< 1.0 A

SAFETY NOTE

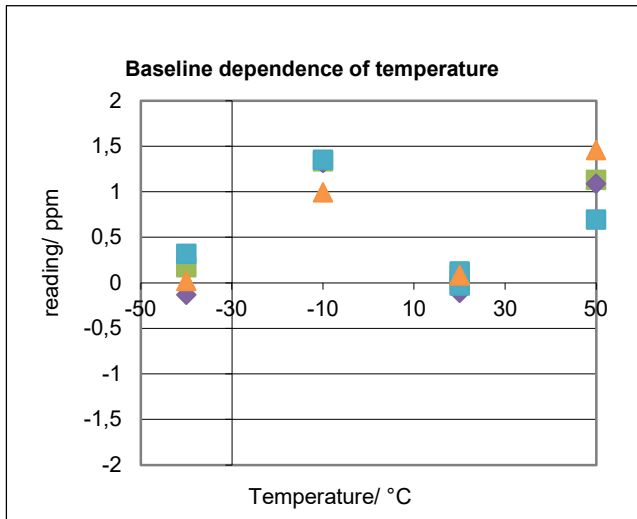
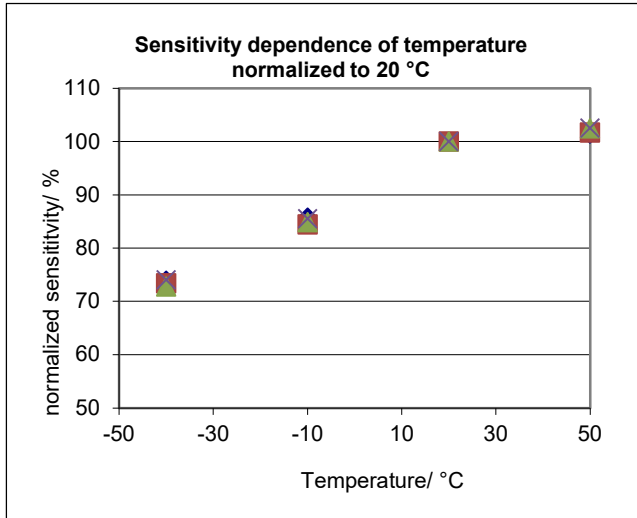
This sensor is designed to be used in safety critical applications. To ensure that the sensor and/or instrument in which it is used, are operating properly, it is a requirement that the function of the device is confirmed by exposure to target gas (bump check) before each use of the sensor and/or instrument. Failure to carry out such tests may jeopardize the safety of people and property.



H2S 2000

Electrochemical Gas Sensor for Hydrogen Sulfide

Temperature performance



Temperature Coefficients		
Temperature	Sensitivity	Zero Current
-40 °C	74 %	0.1 ppm
-10 °C	85 %	1.3 ppm
20 °C	100 %	0.0 ppm
50 °C	102 %	1.1 ppm

Temperature data are taken from a typical batch

Cross Sensitivity & Filter	
Gas concentration	Reading after 5 min
CO ₂ 60 Vol%	0 ppm
CH ₄ 50 Vol%	0 ppm
H ₂ 2 Vol%	150 ppm
Isopropanol 1 Vol%	0 ppm
NH ₃ 1000 ppm	0 ppm
Chemical Filter	None

Signals below baseline are stated as 0

Whilst Sensorix cells are designed to be highly specific to the gas they are intended to measure, they will still respond to some degree to various other gases. The table above is not exclusive and other gases not included in the table may still cause a sensor to react. The cross-sensitivity values quoted are based on tests conducted on a small number of sensors. They are intended to indicate sensor response to gases other than the target gas. Sensors may behave differently with changes in ambient conditions and any batch may show significant variation from the values quoted. Therefore, interfering gases should not be used for calibration.



